



**AURORACIRCUITS**  
North American Technology Solutions Provider for Printed Circuits



## Lighting, LEDs, and Pedestal Applications

LED is a solid base lighting structure that takes electric current and transforms it into light via a semiconductor. LED boards minimize energy use by almost 80%, not to mention they last approximately 25 times longer than a standard bulb. PCBs are essential in the manufacturing of LEDs as they physically back the LED components and conduct heat from the bulbs, in turn inhibiting the components from overheating.

### Industries who commonly utilize LEDs:

- Automotive
- Agriculture
- Consumer Lighting
- Consumer Electronics
- Medical
- Technology
- Telecommunications

### Automotive Applications:

- Lightbulbs
- Down Lights
- Strip Lights
- Selective Dielectric Removal

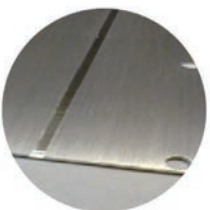
### LPI Soldermasks

- LED WHITE - non yellowing
- BLACK
- GREEN

### PCB Finishes for SMT

- Immersion Silver
- ENIG

### Milling, Countersink, Counterbore & CNC Scoring

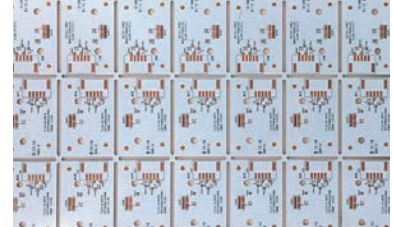
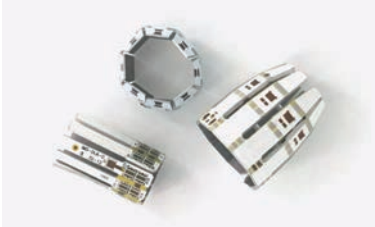


## UL Recognized Metal Clad Materials

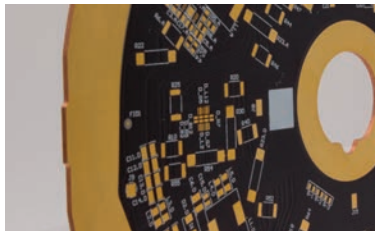
- Bergquist/Henkel
- Polytronics
- Ventec
- Also Bendable Versions
- Aismalibar
- CSEM

## Automotive Applications

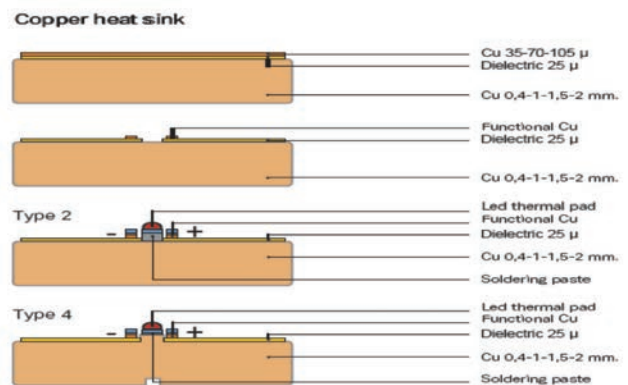
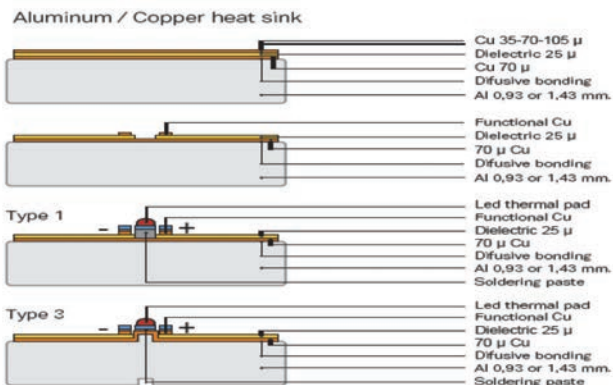
Lightbulbs, Down Lights, Strip Lights



## Selective Dielectric Removal



## Pedestals for High Thermal Dissipation



## LPI Soldermasks

- LED WHITE - non yellowing
- BLACK
- GREEN

## PCB Finishes for SMT

- Immersion Silver
- ENIG
- OSP
- Lead-free HASL

## Other Materials for LED

- CEM1
- FR4 - single sided and PTH designs
- Thermally Conductive CEM3

## About Aurora Circuits

Over 70 years' experience in Printed Circuit Fabrication providing Advanced Thermal Management and Interconnect Technology Solutions for Printed Circuit Designs and Specialty Products.

As one of the trailblazers and longest established, domestic manufacturers in the printed circuit board industry, (formerly known as Kalmus & Associates), Aurora Circuits is known as an industry leader in innovation, customer service and engineering. Let us partner with you to maximize profitability and production sustainability.